

The LIGAS Experience at Four Years: Is the Honeymoon Over?

April 23, 2015

Tony Records - Monitor

traconsult@mindspring.com

- ▶
- ▶ "You never change things by fighting the existing reality. To change something, build a new model that makes the existing model obsolete." -- Buckminster Fuller

Resources and Capacity

- ▶ *Ligas Budget*
 - ▶ FY 14 \$34.8 Million for Ligas Implementation
 - ▶ \$220 Million Additional to Address Payment Cycle Problem
- ▶ *FY 15 Proposed Budget*
 - ▶ \$27 Million for Ligas
 - ▶ Flat Line Budget
 - ▶ Payment Cycle Threatened
 - ▶ *Further Cuts Looming for FY16!*
- ▶ *Ligas Team Members Hired*
- ▶ *Transition Plan Consultant*
- ▶ *Ligas Family Advocate Program Funded*

Resources and Capacity (Cont.)

- ▶ Some Progress, But Much To Be Done!
 - ▶ DDD Seriously Understaffed
 - ▶ Overall Rates Still Dangerously Low
 - ▶ Rates to Support Smaller Settings are Still Problematic
 - ▶ Resources for Employment Options Still Wanting
 - ▶ New Waiver Rules will Challenge Lack of Flexibility in Waiver

Class Member List

- Two Class Lists

- ¶2 (a) ICF/DD Class Members
 - Current Total 1,359 Class Members
 - List Established and Documentation Maintained
 - List Has Improved Over Time
- ¶2 (b) Waiting List Class Members
 - Current Total Over 15,000
 - Accuracy of PUNS List Data Improving
 - Inaccuracies Have Affected Funding Selection Process
 - Highlights the Need for Comprehensive Data System

Transition Services Plans

- ▶ Initial Review of Transition Plans Identified Numerous Problems
 - ▶ Individual Participation
 - ▶ Employment Options
 - ▶ Lack of Accessible Settings
- ▶ Transition Planning Consultant is reviewing plans and working with PAS Agencies and DDD
 - ▶ Second Review (3/15) of Transition Plans Shows Significant Improvement
 - ▶ More Training Needed to Put Real Employment on the Table
- ▶ PAS Agency Training Ongoing

What Do The Transition Plans Show?

7

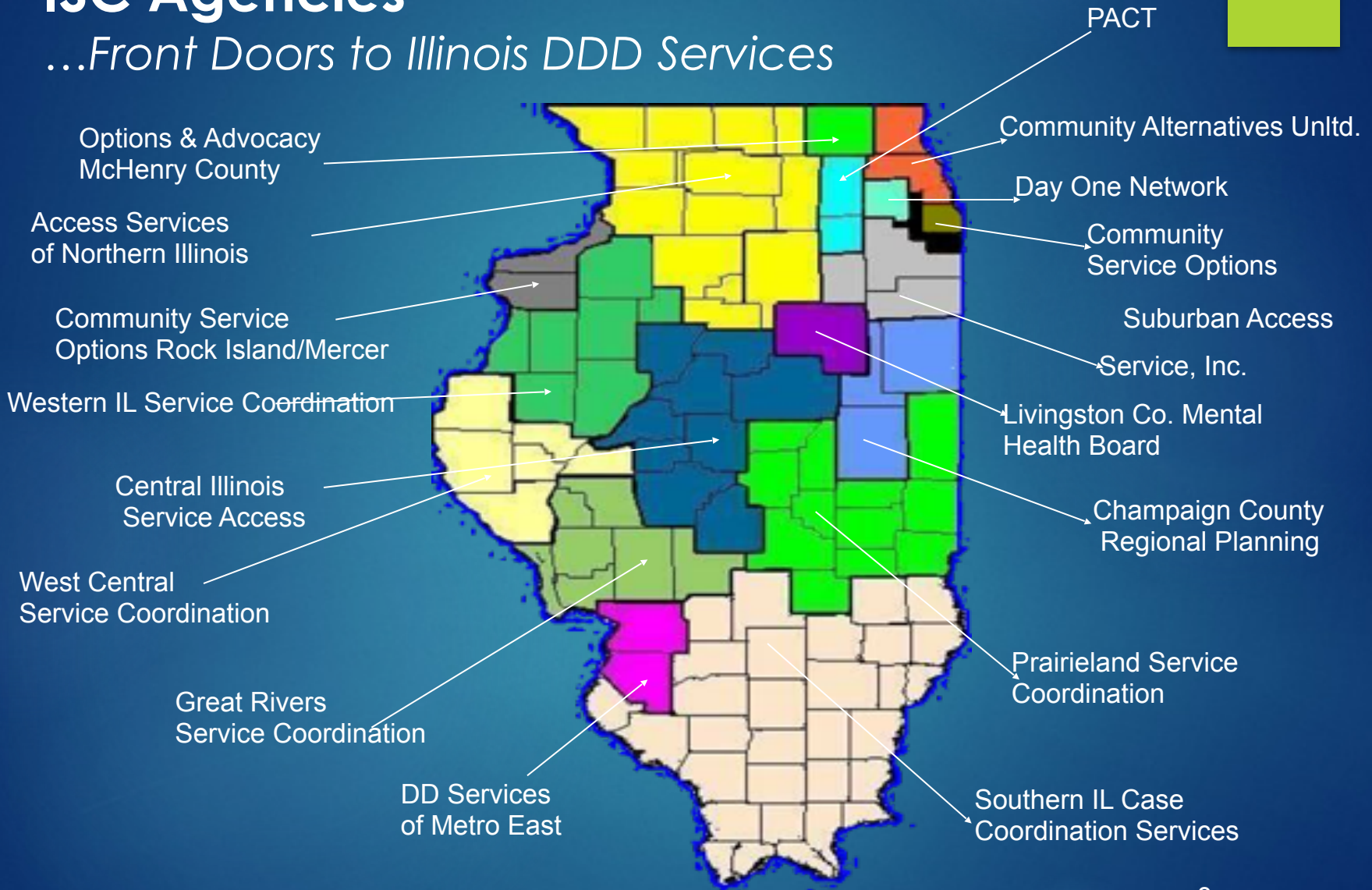
- Over 130 Transition Plans Were Reviewed
- Many Class Members Were Not Directly Involved in the Plan Development
- Most Plans Lacked Options for Daytime Activities
- LSTP is Not Foundation for Service Plans

What About Employment?

- Only 14 Plans Reflected any Discussion of Employment
- Only Four Plans Included Supports for Employment
- School Transition Plans Were Rarely Considered

ISC Agencies

...Front Doors to Illinois DDD Services



Transition for Class Members in ICFs/ DD

4/29/15

- ▶ 1,324 Class Members in This Category
 - ▶ 1,058 Have Received Funding Approval
 - ▶ 945 Have Actually Started Services (11 in Home Based)
 - ▶ Presumptive Eligibility In Place
 - ▶ 121 Individuals Have Changed Their Mind and Chosen to Stay
 - ▶ Updates on Remainder of Class Members are Obtained Monthly
 - ▶ Voluntary Downsizing and Closure Agreement have and will Continue to have Significant Impact on this List (389 class members)

92% Family/guardians very or somewhat satisfied after their move from an ICF/DD
69% had been very or somewhat satisfied at the former ICF/DD
33% increase in satisfaction

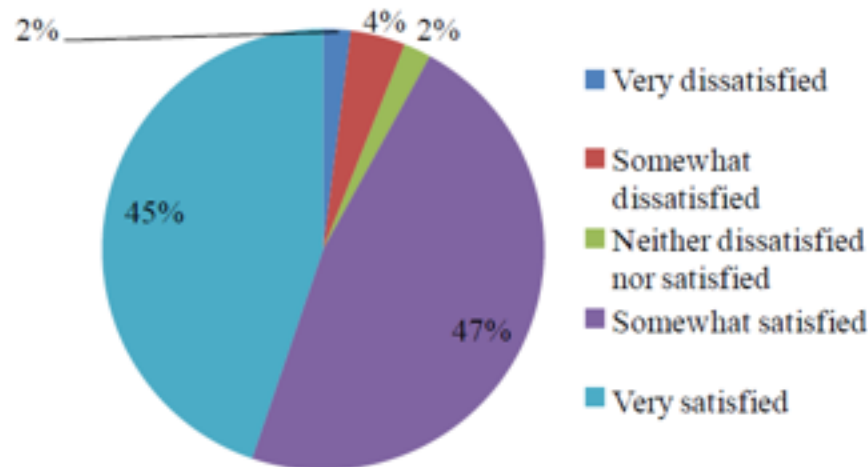
- About half (51%) of the individuals now have their own room (versus 22% in the ICF/DD).

The vast majority of respondents (92%) reported satisfaction with their current placement, including:

- 91% of family/guardians of individuals with moderate maladaptive behaviors.
- 96% of family/guardians of individuals with severe maladaptive behaviors, and
- 90% of those with fair to poor health.

"The CILA that is his current placement has surpassed all expectations."

Figure 2: Satisfaction with Current Placement



Services for Class Members In Situation of crisis

- Definition of Crisis
 - Caregiver is deceased
 - Caregiver is unable to address support needs, jeopardizing health and safety of individual
 - Individual is being physically or mentally abused
 - Individual is homeless
 - Behaviors put the individual and/or family member(s) at risk
- State will Promptly Develop Transition Services Plans
- Those in Crisis will Receive Services Expeditiously

Crisis Services

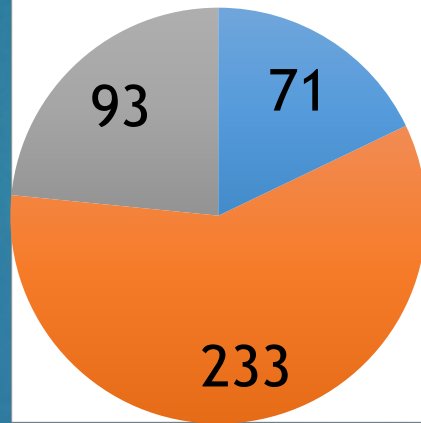
12

4/29/15

- ▶ Notification of Non-Compliance, May 1, 2012
- ▶ Corrective Action Plan Developed
 - ▶ Internal Quality Assurance Controls
 - ▶ Streamlined Processing Steps
 - ▶ Adjustments to Data-Base
 - ▶ Changes Review Meeting Structure
 - ▶ Authorization for Network Coordinators to Issue Pre-Award Letters
 - ▶ Training of Network Staff and PAS Agencies
 - ▶ Management Review will be Included In Data Reports Document
- ▶ Subsequent Compliance Review Found Substantial Improvement
- ▶ Substantial Increase in Crisis Requests in the Las Two Years!

FY 2014 C

Classification of Crisis Requests

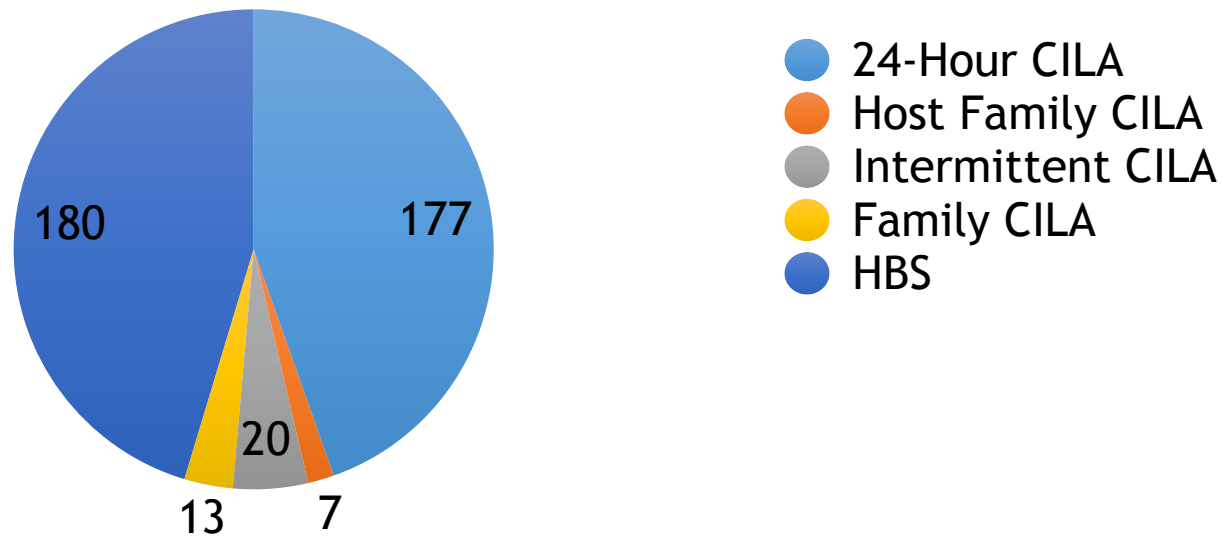


- Abuse
- Neglect
- Homeless

FY 2014 Crisis Requests

4/29/14

Services Authorized



Transition for Class Members on Waiting List

15

4/29/15

15,190 Class Members in This Category

- ▶ Five Selection Events (total of 4,306 class members)
- ▶ Serious Flaws in List - Eliminated Nearly One third of Individuals from Selection Processes
- ▶ Services Initiated for 2,262 Class members!
- ▶ Funding Approved for Additional 38 Class Members
- ▶ 15 Packets Have Been Submitted for Approval
- ▶ 288 More Being Screened
- ▶ 52 More Confirmed That They Want Community Services
- ▶ Fifth Selection Letters Sent 3/24/14 (671 Letters)
- ▶ Sixth Selection Event Will Be In 2016

Transition for Class Members on Waiting List (Cont.)

16

4/29/15

- ▶ Projections are that more than 2,350 class members will be served by June 30, 2014 – 350 more than required!!
- ▶ Happened Due To DDD Aggressively Working with PAS Agencies to Expedite Processing
- ▶ Clear Need to Expand Options!!!!
 - ▶ Employment and Meaningful Day Options
 - ▶ Smaller Residential Settings
 - ▶ Accessible Settings
 - ▶ Services for People with Intensive Behavior Support Needs
- ▶ Many Class Members and Families are Reluctant to Ask For What They Want!

Transition Plan

Paragraph 13



What does this really mean?

- The process for developing a Transition Service Plan shall focus on the Class Member's personal vision, preferences, strengths and needs in home, community and work environments and shall reflect the value of supporting the Class Member with relationships, productive work, participation in community life, and personal decision-making.

There is Ligas - - Then There is Not Exactly

- ▶ Real Employment
- ▶ Meaningful and Flexible Day Activities
- ▶ Smaller Settings
 - ▶ Community Integration Activities
 - ▶ Privacy
- ▶ Accessible Settings
- ▶ Person Centered Planning
- ▶ Class Member Data
- ▶ Manageable Support Coordination Ratios

Paragraph 23

4/24/2015

All Class Members who are on the Waiting List after the end of the sixth year following Approval of the Decree shall receive appropriate Community-Based Services and/or placement in a Community-Based Setting, such that they move off the Waiting List at a reasonable pace.....

CMS Home and Community Based Services – Final Rule January 2014

- ▶ Medicaid Program; State Plan Home and Community-Based Services, 5-Year Period for Waivers, Provider Payment Reassignment, and Home and Community-Based Setting Requirements for Community First Choice (Section 1915(k) of the Act) and Home and Community-Based Services Waivers (Section 1915(c) of the Act)

What does this have to do with Ligas?

- ▶ Intent of the Final Rule
 - ▶ To ensure that individuals receiving long-term services and supports through home and community based service (HCBS) programs under the 1915(c), 1915(i) and 1915(k). Medicaid authorities have full access to benefits of community living and the opportunity to receive services in the most integrated setting appropriate.

Highlights of Final Rule



- ▶ Defines, describes, and aligns home and community-based setting requirements across three Medicaid authorities
- ▶ Defines person-centered planning requirements for persons in HCBS settings under 1915(c) HCBS waiver and 1915(i) HCBS State Plan authorities
- ▶ Implements regulations for 1915 (i) HCBS State Plan benefit.

Home and Community-Based Setting Requirements

- ▶ The home and community-based setting requirements establish an outcome oriented definition that focuses on the nature and quality of individuals' experiences
- ▶ The requirements maximize opportunities for individuals to have access to the benefits of community living and the opportunity to receive services in the most integrated setting

The Final Rule Establishes

- ▶ Mandatory requirements for the qualities of home and community-based settings including discretion for the Secretary to determine other appropriate qualities
- ▶ Settings that are not home and community-based
- ▶ Settings presumed not to be home and community-based
- ▶ State compliance and transition requirements

OUTREACH

25

- Training Activities for PAS Agencies
- Development and Refinement of Ligas Website
- Outreach Contract with Council on Quality and Leadership (CQL)
 - Phone Calls so Far to 1,562 Potential Class Members
 - 88 Class Member Have Chosen Community
 - Implementation of Outreach Problematic

4/29/15

The Bottom Line

26

- ▶ More than 4,400 Class Members Have Received Funding Approval for Services as a Direct Result of *Ligas*!!
- ▶ Most People in Crisis are now being served in 24-72 hours
- ▶ This is the Fourth Year of at Least a Nine-Year case!
- ▶ *Ligas* Activities Have Exposed and Will Continue to Expose many Weaknesses in the System!
- ▶ Making, Documenting and Honoring Choice Has Been Problematic!
- ▶ Rates for Services are Inadequate!
- ▶ Budget Crisis Could Take us Back to Court!

4/29/15

Contact The Monitor



Tony Records

traconsult@mindspring.com

301-529-9510

Questions?

